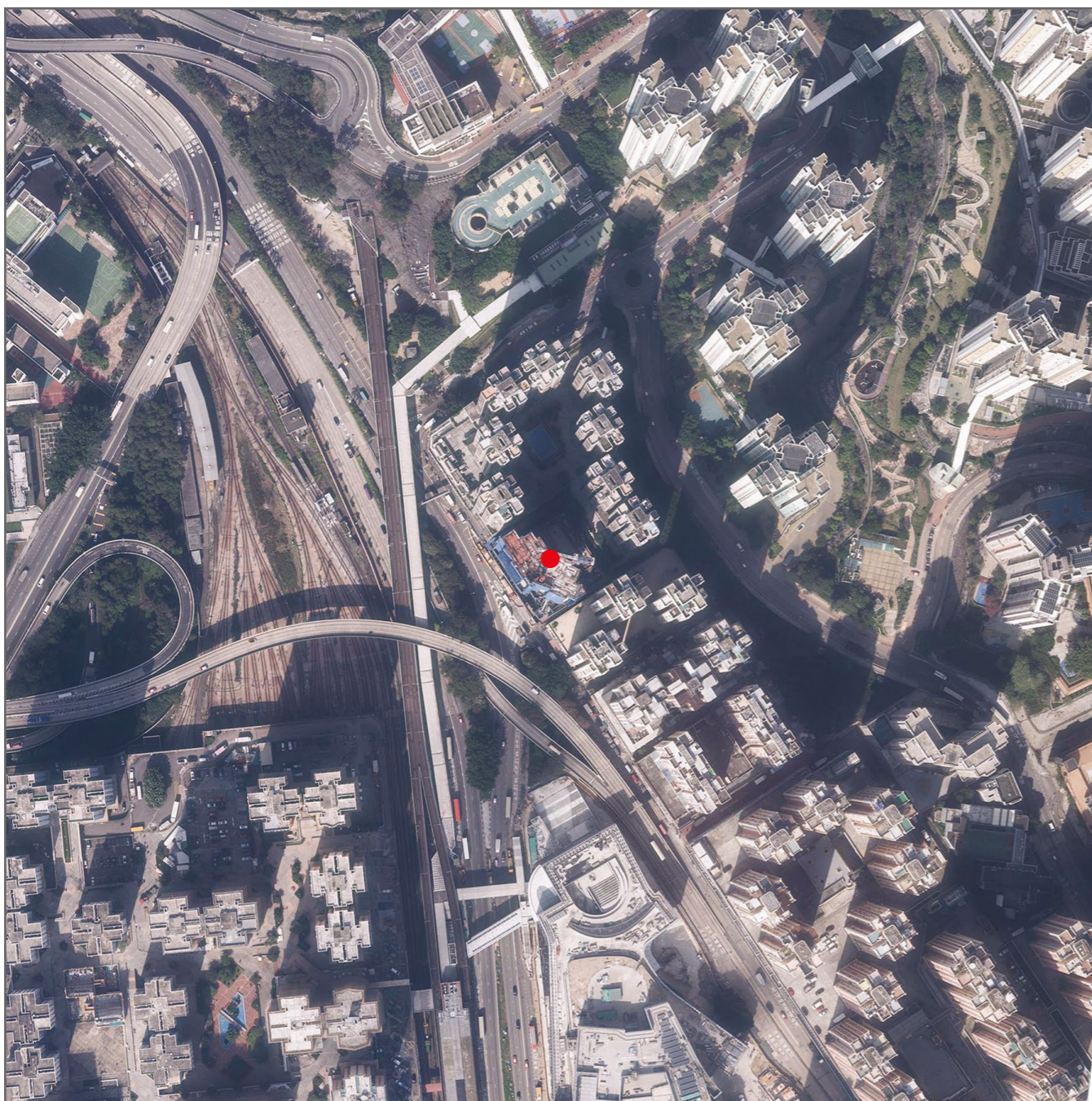


AERIAL PHOTOGRAPH OF THE DEVELOPMENT 發展項目的鳥瞰照片



This blank area falls outside the coverage of the relevant Aerial Photograph.
鳥瞰照片並不覆蓋本空白範圍。

● Location of the Development
發展項目的位置

Adopted from part of the aerial photograph taken by the Survey and Mapping Office of the Lands Department at a flying height of 6,900 feet. Photograph No. E167188C, Date of Flight: 8th December 2022.
摘錄自地政總署測繪處在飛行高度6,900呎拍攝之鳥瞰照片，編號為E167188C，飛行日期：2022年12月8日。

Survey and Mapping Office, Lands Department, the Government of HKSAR © Copyright reserved - reproduction by permission only.
香港特別行政區政府地政總署測繪處©版權所有，未經許可，不得複製。

The Aerial Photo is provided by the Hong Kong GeoData Store and intellectual property rights are owned by the Government of HKSAR.

鳥瞰照片由香港地理數據站提供，香港特別行政區政府為知識產權擁有人。

Remark:

The aerial photograph may show more than the area required under the Residential Properties (First-hand Sales) Ordinance due to the technical reason that the boundary of the Development is irregular.

備註：

由於發展項目的邊界不規則的技術原因，此鳥瞰照片所顯示的範圍可能超過《一手住宅物業銷售條例》所規定的範圍。